



## Notice

Product	GSM	Notice No.	12-38
Model	Galaxy S3(GT-I9300#)	Notice Date	4 <sup>th</sup> Jun '12
Subject	JTAG Guide		
Scope	Subsidiary ( Yes )	ASC ( Yes )	Customer ( No )

### 1. Purpose

- To inform All ASCs of information about Technical Tip.

### 2. Instruction

#### - Brief JTAG process for GT-I9300

- 1) Copying JTAG(bootloader) file to external SD Card, using normal GT-I9300.
- 2) inserting the SD card to 'No Power' phone, and copy the bootloader file to the defective PBA.
- 3) After downloading bootloader file to the defective phone, enter the download mode with the phone, and download Full S/W.(PIT, PDA, CSC, PHONE files)

#### - Pre-requisite

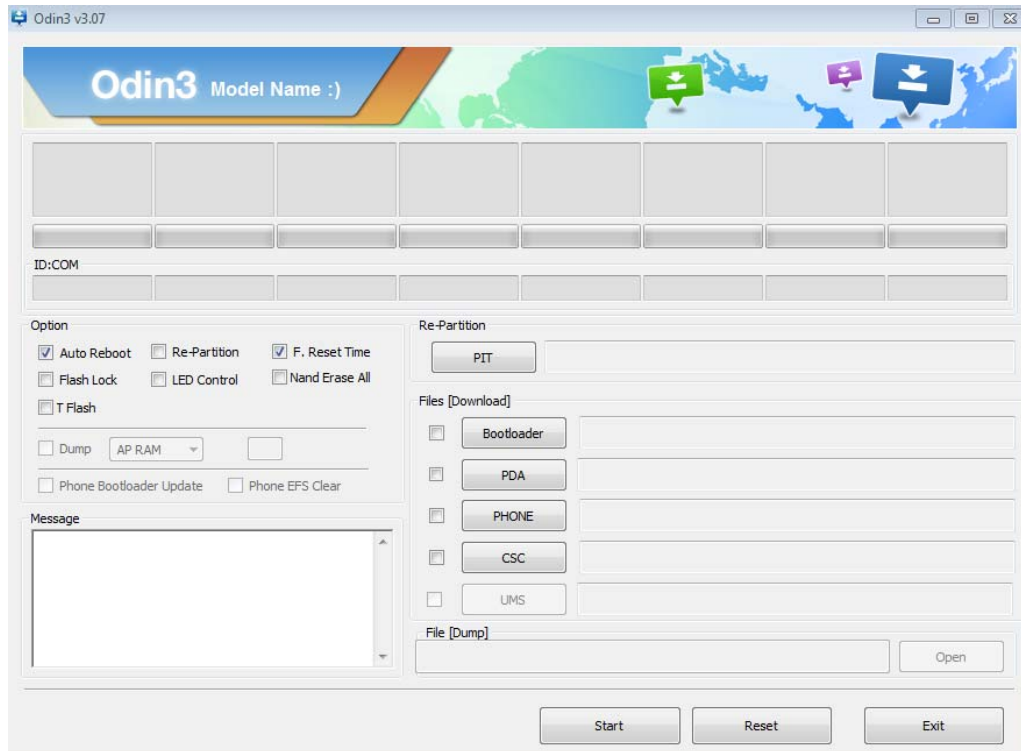
- 1) One normal I9300 phone(normally booted on)
- 2) External SD Card (Memory size should be 2GB or bigger.)
- 3) Odin3 v3.07.exe and Odin3.ini (uploaded on HHPsvc > Find Content > Download PGM > GT-I9300
- 4) GT-I9300\_Boot\_Recovery.tar (uploaded on HHPsvc > Find Contents > J-TAG Program > GT-I9300

**Published By** [Global CS Team in HQ]

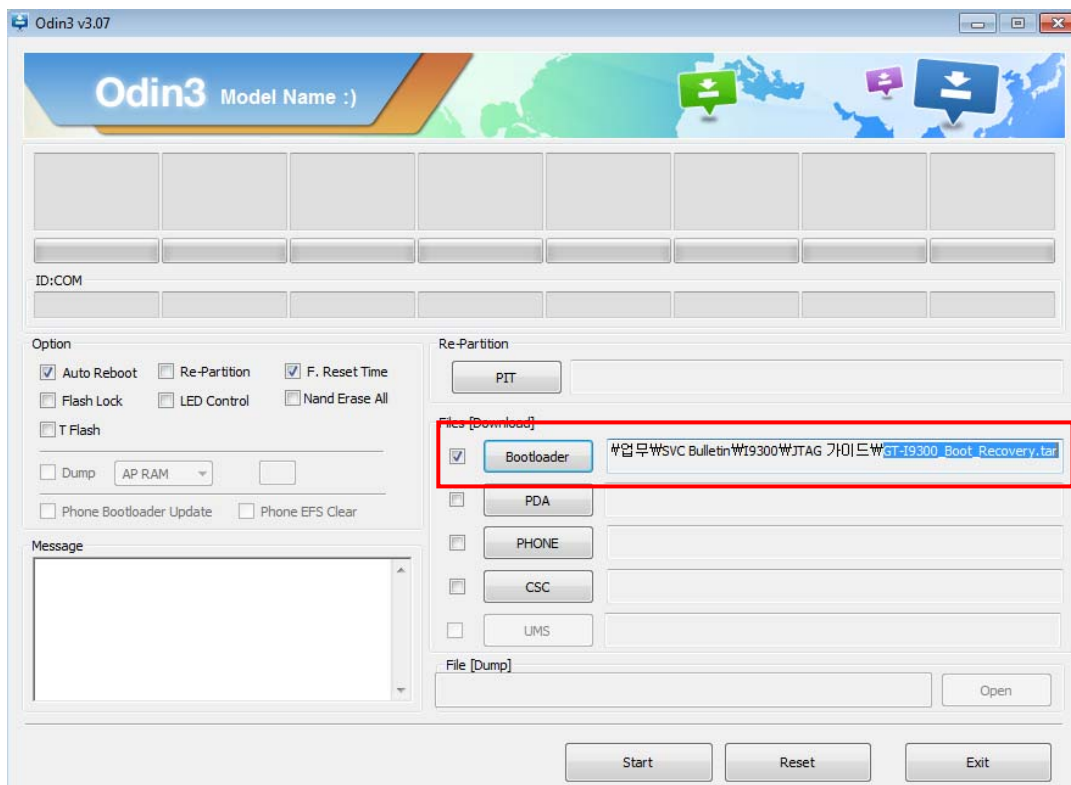
※ This Service Bulletin is a property of Samsung Electronics Co.,Ltd. Any unauthorized use of Bulletin can be punished under applicable International and/or domestic law.

- Detailed JTAG Process

- 1) Insert External SD Card to normal phone to copy Bootloader to SD card.
- 2) Run Odin3 v3.07.exe

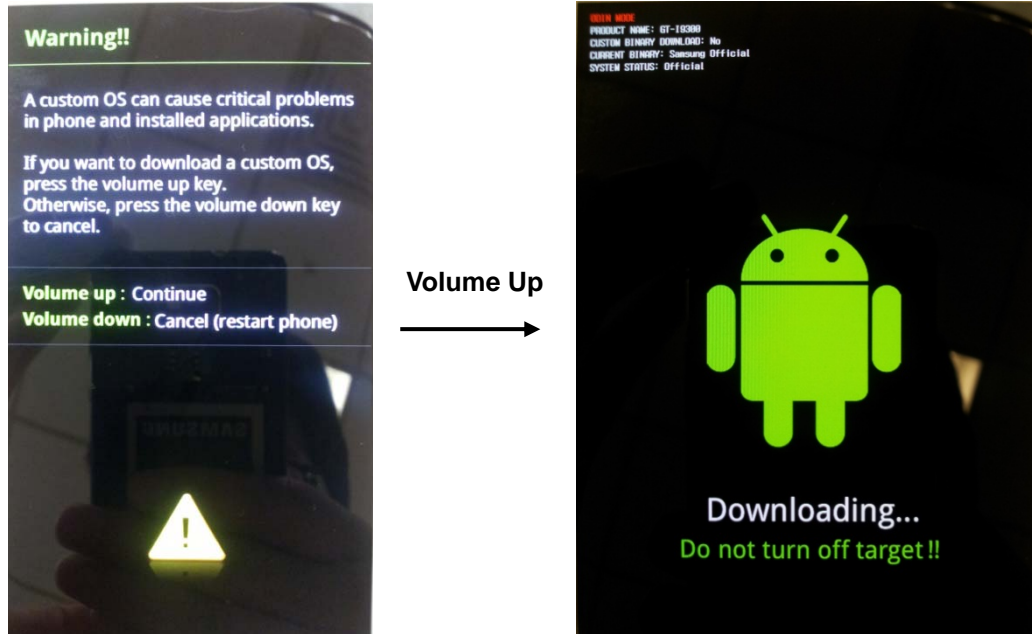


- 3) Click 'Bootloader' button and load "GT-I9300\_Boot\_Recovery.tar".



4) Enter download mode with the normal phone(SD Card inserted).

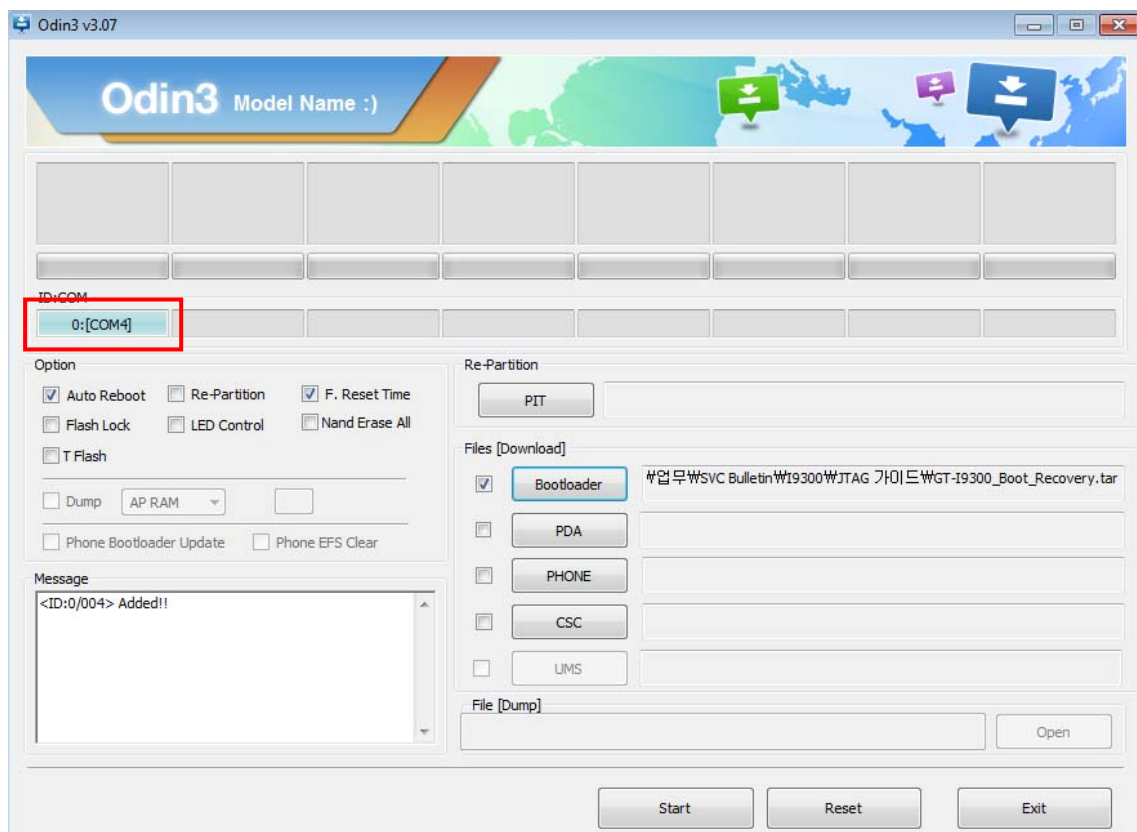
※ Download Mode : Volume Down key + Home key + Power Key and press Volume Up key.



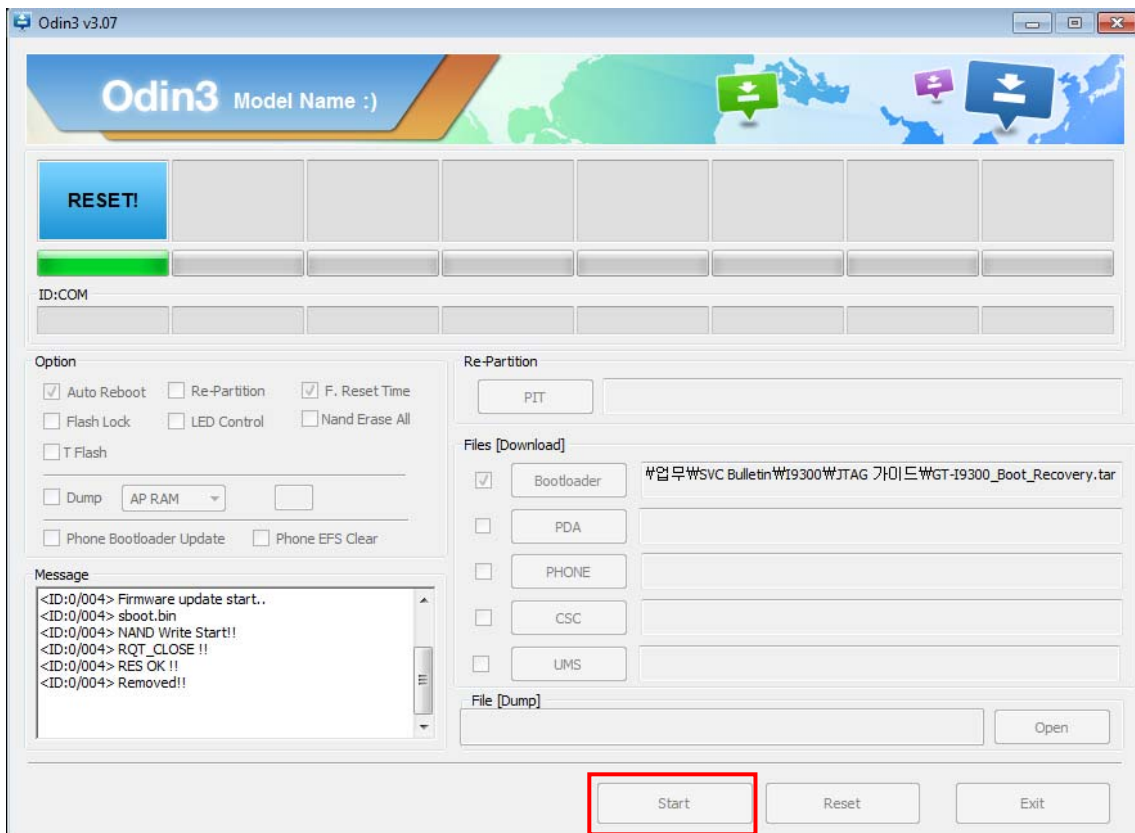
< Volume Down key + Home key + Power Key >

< Download Mode >

5) Connect the phone to PC, using USB cable.

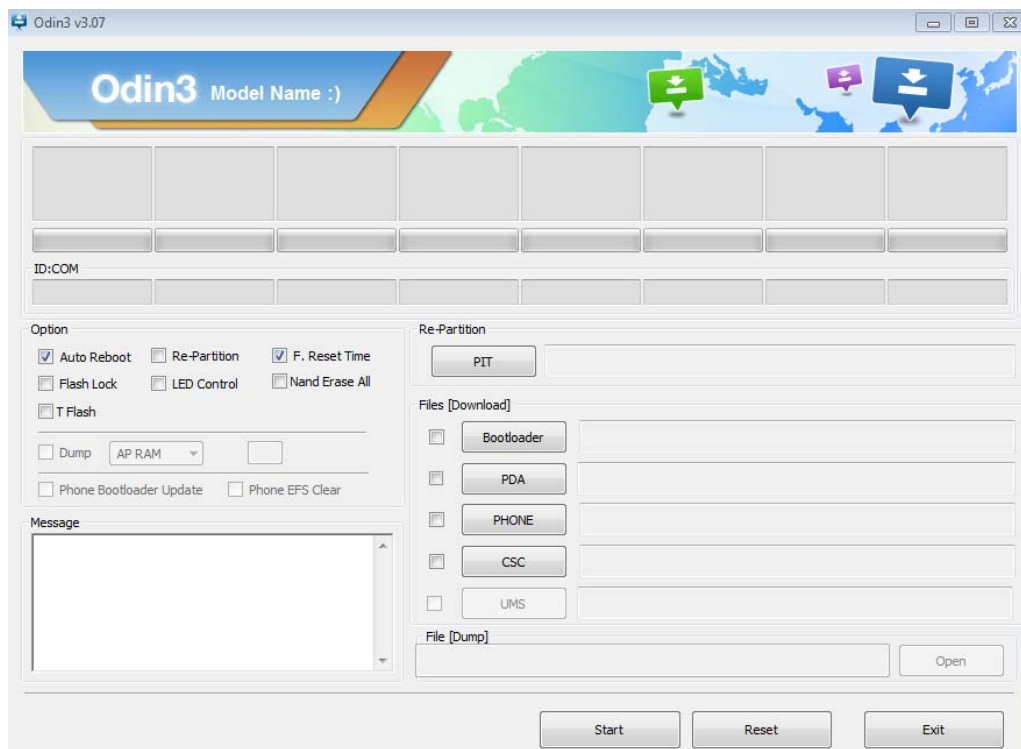


6) Click Start button to copy bootloader to the phone.

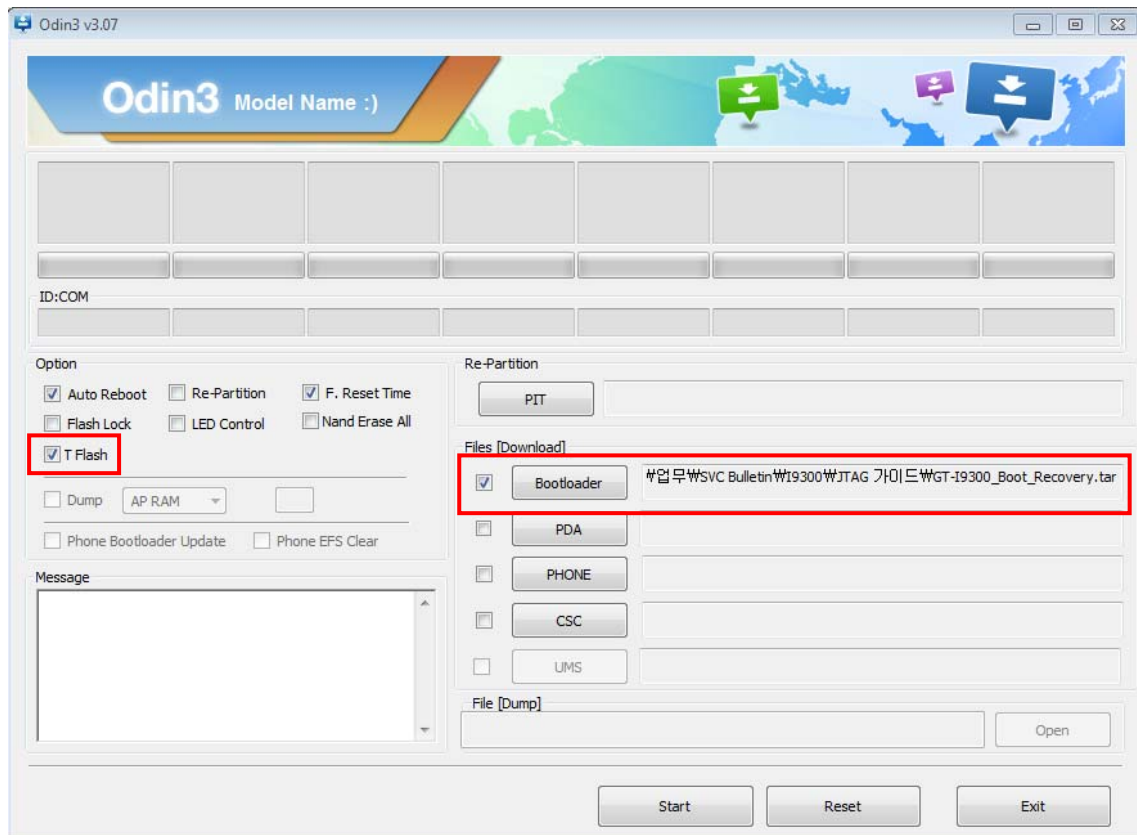


7) Disconnect the phone from PC.

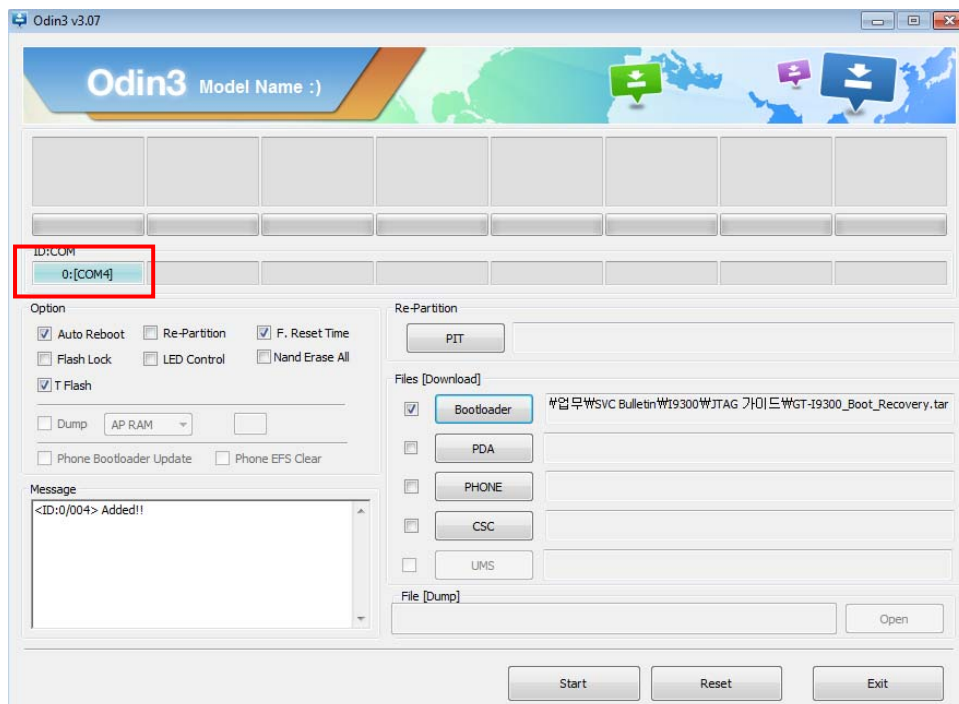
8) Close the Odin3 v3.07.exe and Run it again.



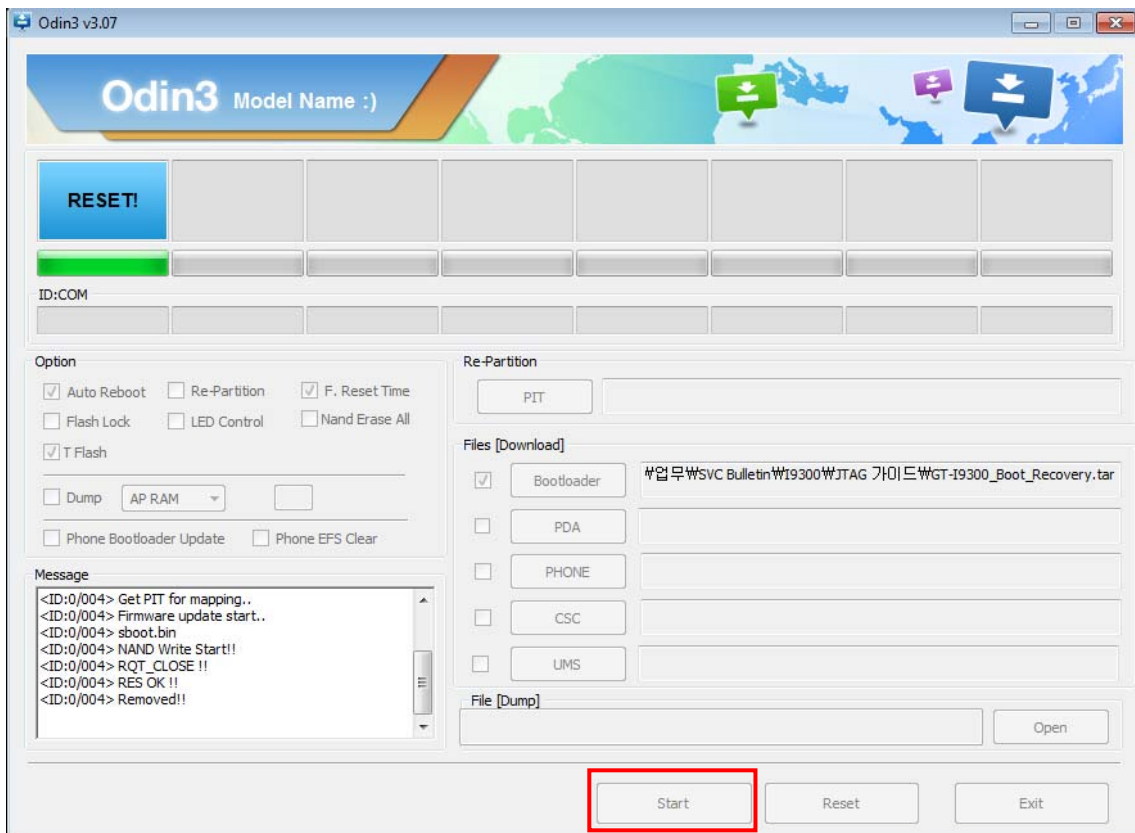
- 9) Click 'Bootloader' button and load "GT-I9300\_Boot\_Recovery.tar",  
**And check 'T Flash' option in the Odin, to copy bootloader to SD Card.**



- 10) Enter download mode with the normal phone (bootloader was copied before),  
and connect it to PC again.



11) Click Start button to copy bootloader to the SD Card.



12) After downloading, turn off the phone and remove the SD Card.

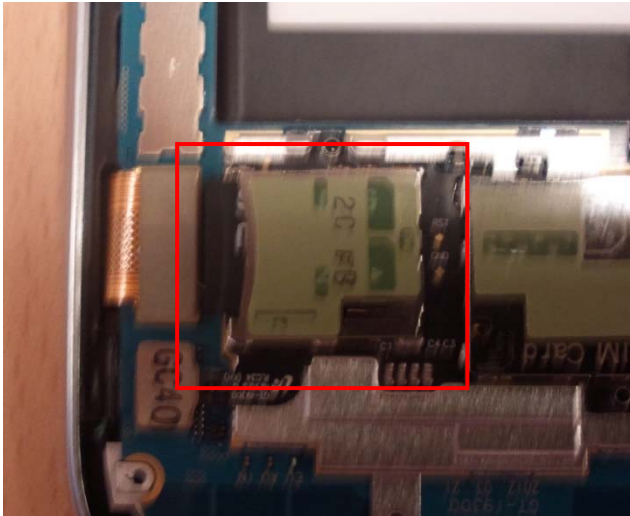
→ **This SD card will be used to recover boot of the phone.**

13) Disassemble the 'No Power' phone, but connecting the LCD with PBA, to check the LCD if boot recovery is successfully done.



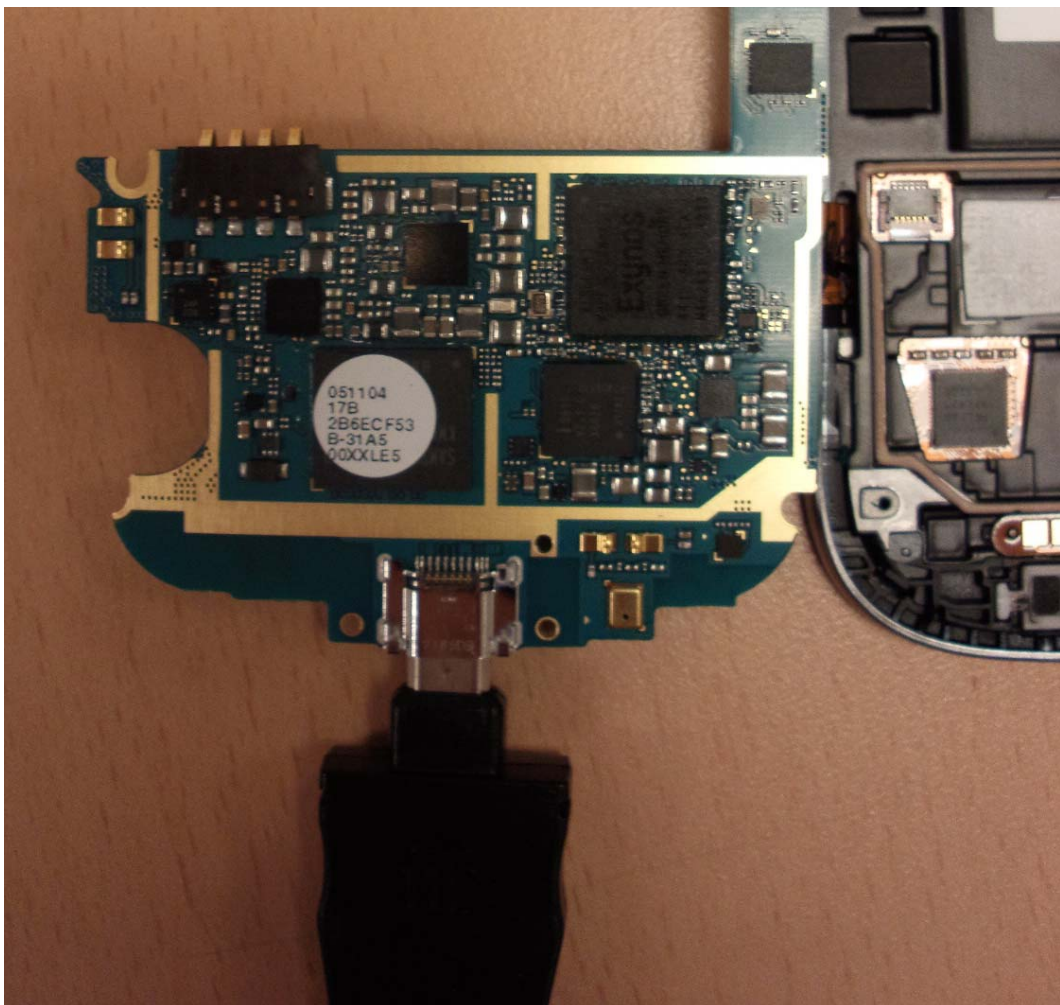


14) Insert SD card(bootloader was copied) to the PBA.

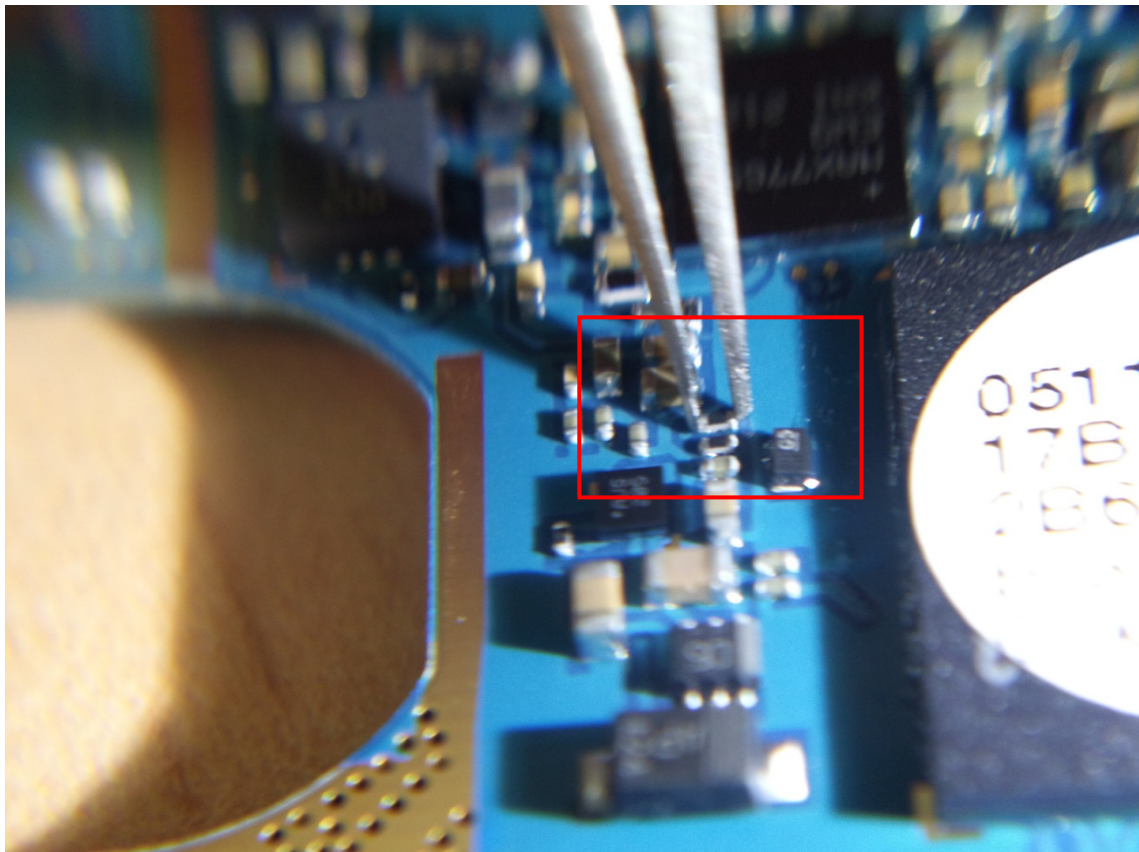
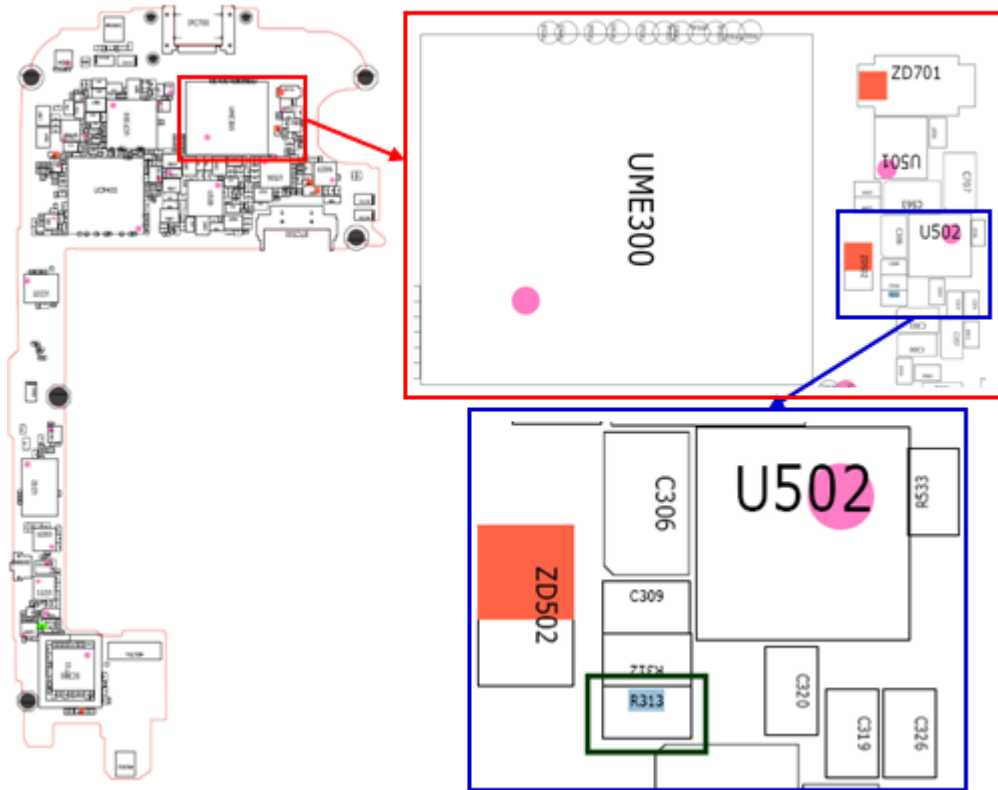


15) Connect the PBA with Anyway JIG and power supply, with the POWER OFF.

※ Use 11pin cable to supply power to the PBA.



16) Short R313 resistance.(HQ uses tweezers to short the resistance)





17) Turn on the PBA, and REMOVE THE SHORT between 3 to 6 seconds from turning on the PBA.

18) After approximately 5 seconds, you can see message on the LCD boot recovery was succeeded.



19) Turn off the pba, and remove SD Card.

20) Assemble the phone, and enter download mode.

21) Download Full S/W including PIT, PDA, CSC and PHONE.